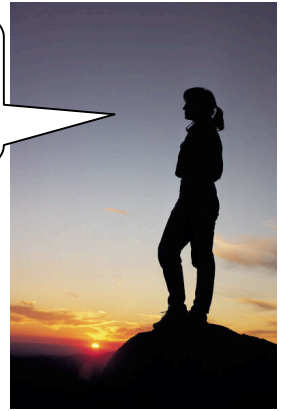


Earth 134 - Geologic Field Studies in the Western Sierra Pre-Field Trip Orientation

Keep this
sheet for
reference.



WELCOME to what may be one of the most meaningful academic experiences you will have in your college career! Many students who have participated in our field studies trips have returned with a new appreciation for the incredible beauty of our earth, and how it came to be this way. In this class, you learn about what the rocks have to tell us, geologic processes that are occurring now and in the past, and the earth's history. And your teachers are eager to share it with you!

To be best prepared for this experience, please read the following carefully.

❖ ACADEMICS AND BACKGROUND

- **Nature of course.** Please note that Earth 134 is a rigorous academic short course. You will be earning 2.5 units of credit in 8 days. Generally, we are up at first light, and back in camp to help make dinner because we are the “woolly crew” on this trip. **Prerequisite.** There is no geology pre-requisite for this trip. Those with no geology experience will be required to attend the full session at the orientation to help fill in the needed areas of background for an academically successful course. Our intention is to make this a rewarding educational experience for those of all levels of experience.

❖ COURSE REQUIREMENTS AND GRADING

- **Lecture Stop Attendance.** There will be 5-7 lecture stops each day, including Day 1. Lectures will vary in length from 30 minutes to 1 hour in length.
- **Field Trip Notebook.** 1/2 of your grade is based on your field notebook. Your notes will be graded on completeness, neatness, and organization. You will turn in your completed field trip notebook when you get in the vans prior to returning to Santa Barbara. Notebooks will be graded and returned to you about 2 weeks after the trip.
- **Morning Quizzes.** 1/2 of your grade will be based on your quiz scores. There will be a quiz each morning on the previous day's stops. The first quiz on Tuesday morning will also include a **Geologic Time Scale quiz**, which you must pass with an 80% or better grade. The timescale will be included in your field trip notebook, and is also available at this meeting.

❖ PREPARING FOR THE TRIP

- **Arrange a ride.** Carpooling with a non-field trip driver is best. You can park in SBCC student lots if you have all-day parking permits, but we DO NOT recommend it, due to past vandalism incidents. Parking on campus is at your own risk.
- **Weather.** You will be outside at the mercy of extremes in weather. The temperature *may* be in the 90s or 100s during the day and *may* drop into the 20s at night. The evenings in the high Sierra Nevada are not like the mild, balmy evenings in Santa Barbara. During the trip, we will be at elevations ranging from below sea level to 10,000+ feet. It may rain or snow.

❖ PACKING YOUR GEAR

- **Equipment list:** Please refer to the equipment list you were given when you paid at the cashier, or pick up a new one.
- **List A on the Equipment List.** This is the gear that you will only be seeing at camp in the evenings. We move our camp stuff from camp to camp, and you will not have access to it during the day.
- Be sure to have a **warm sleeping bag rated for sub-freezing temperatures, an insulating pad, and a 2-3 person tent with a rain fly.** (no “condo tents.”) If you don't own this stuff, borrow or rent it. You may share a tent with someone else, **but only 2 people per tent.**
- Bring your gear in **durable luggage or duffle bags.** No backpacks with frames, since these can easily be bent. Your luggage will be handled roughly. Also, airline-style suitcases are not recommended for camping. The rollers get clogged with dirt and they don't pack well. Duffel or zipper-type soft bags work the best.
- **Do not pack breakables.** We can almost guarantee that breakables will be broken!
- **Put your name** on every piece of luggage you bring.
- **List B on the Equipment List.** This is the gear you want with you during the day. Bring a separate day-pack for this stuff.
- Bring a **small flat-folding beach chair or “tube” chair** with you during the day for lecture stops.
- Pack a **large lunch** (or two lunches) for the first day only. You will be hungrier than you think by dinnertime at 7:15 p.m.
- Bring one or two **filled water bottles.** We carry water during the day to refill.
- Bring a 3-ring binder (1”) plus lined, 3-hole punched paper for notes.
- **Swim/shower stuff:** Always keep with you during the day, in case plans change. Also your **rain gear** if rain is forecast.
- **NOTE: Bring extra batteries, pens, paper, etc. if you think you might run out or run short.** We rarely stop at convenience stores/gas stations to buy things.

❖ **PREPARATION FOR DEPARTURE**

- **SUNDAY, August 3, 2014. DEPARTURE at 5:45 a.m.** Please arrive no later than 5:30 a.m.

1. Bring luggage (“A” List)
2. 3-ring binder, chair, big lunch, water and other “B” List items
3. Get a good night’s sleep and set multiple alarms, if necessary. Remind the person driving you to SBCC that you must be at the school no later than 5:45 a.m.

If you show up after we are gone: You are **not allowed** to follow us in a private vehicle for insurance/liability reasons (school regulations). **If** you miss the bus, the best course of action is to go home, and then drop the class no later than Tuesday for a “W.” No refunds for the field trip fee are granted to no-shows (food has already been purchased for you).

❖ **ON THE ROAD**

- **First Stop** is approximately 2 hours after leaving campus. We won’t be stopping en-route, so don’t drink too much coffee!
- **Lecture stops.** Bring your notebook and note-taking materials to each stop. Also your chair.
- **Be prepared** to hike short distances. Wear **closed-toed shoes** every day (sneakers work great).
- **Travel between stops - Travel time is academic time.** Your attention and participation is expected en-route, unless your instructor indicates otherwise - no cell phones, iPods, playing cards, etc. in the vehicles. Cell phones or music with earbuds/headphones are allowed in camp until 10:00 p.m. lights out/quiet hour. Ask if in doubt.
- **Swim/shower stops.** We plan on having swim/shower stops during the trip. Consider bringing handi-wipes - these are great for freshening up.
- **Money.** Bring a minimum of \$30.00 for showers during the trip. More money for postcards, books, batteries, and snacks is optional.
- **Convenience stops.** We are only occasionally able to stop at any stores. Bring everything you need.

❖ **CAMP ROUTINE** (Your notebook will contain additional information about camp logistics.)

- **Camping.** We camp in developed camps and will need to be extra considerate of our neighbors. **“Lights out” and quiet at 10:00 p.m.**
- **Food.** We will be the “woolly crew” and participate in camp set-up, food preparation and clean up. If you have any food allergies, let us know ASAP.

❖ **CONDUCT** (see the green *Standards of Student Conduct* sheet for more details)

- Please remember, as a participant on this field studies course, at all times you represent Santa Barbara City College; therefore, we ask that you conduct yourself in a way that reflects well on SBCC.
- Per school policy, the Standards of Student conduct apply from the moment we leave campus until the moment we return, and all disciplinary measures that would apply on-campus also apply in the field.
- Absolutely NO alcohol or drugs are allowed at any time of the day or evening while on the trip.

❖ **BEFORE YOU LEAVE THE MEETING: Did you....**

- **Check and initial the roll sheet** to make sure you have officially 1) paid the \$200 fee, and, 2) added the class?
- **Read / fill in / sign the green forms?** Medical Card-both sides, Liability Waiver, Student Conduct agreement?
NOTE: **if you are under 18**, you also need a parent’s signature on the Liability Waiver, plus one other form, (see instructor)
- **Leave the green forms with us?**
- **Report any food allergies/sensitivities to an instructor? (Or other medical issues about which we should be aware.)**