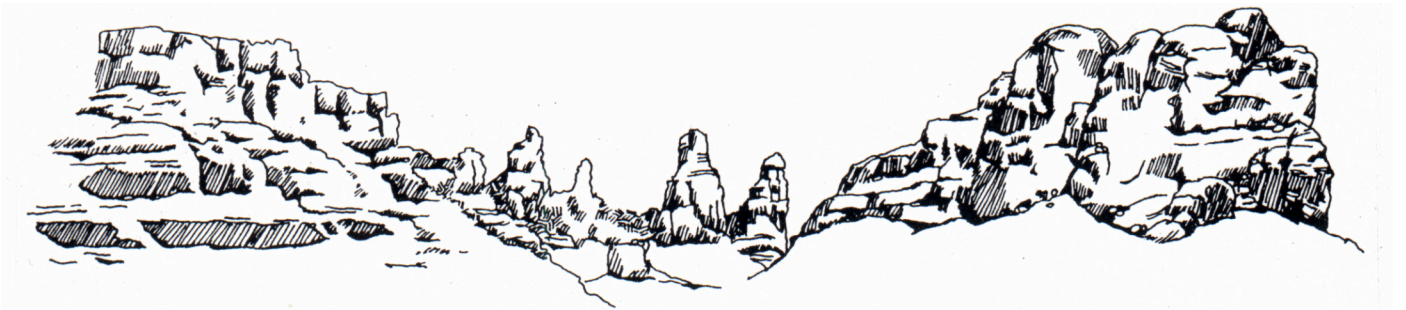


Earth 133 - Geologic Field Seminar of the Colorado Plateau

May 31 - June 14, 2014

Colorado Plateau Information Sheet



Earth 133 - Geologic Field Seminar of the Colorado Plateau is a fifteen-day excursion of the National Parks of northern Arizona, Colorado and Utah: Grand Canyon, Glen Canyon Dam, Four Corners, Navajo, Monument Valley, Natural Bridges, Arches, Canyonlands, Capitol Reef, Escalante Petrified Forest, Bryce, Zion, and much, much more! This course is designed as an "honors level" field experience where principles and concepts learned in first year geology classes can be applied and interpreted in the field.

Instruction follows a seminar format wherein each student is responsible for researching, developing, and presenting to the class a topic relevant to the parks we visit. Students are required to keep a field notebook, take morning quizzes, and actively participate in geologic discussions, critiques, and arguments.

This is truly a unique opportunity for you to visit, interpret, and understand some of the outstanding geologic sites of this world.

Instructional Staff

Jan Schultz, Jeff Meyer, Eiko Kitao, plus others, will provide informal instruction throughout the trip.

Support Staff

Kevin McNichol, Lab Supervisor, organizes and supervises the logistics of the trip and camp set-up. He is assisted by a group of volunteer field trip veterans.

Texts, Course Credit, and Grading

	Purchase at SBCC Bookstore
Required	<i>Geologic History of Utah</i> , Hintze
Recommended	<i>Ancient Landscapes of the Colorado Plateau</i> , Blakey and Ranney
Optional texts	<i>Pages of Stone</i> , Chronic <i>Geology of Utah's Parks and Monuments</i> , UGA

You will receive 4 units of credit for taking Earth 133. Grades are based on your morning quizzes (50%), seminar presentations (40%), and your active and enthusiastic participation (10%) on the trip.

Work Crews

There are two ways in which you are expected and encouraged to participate in the running of the camp: a) daily help with general camp chores, and b) a one-time 24-hour "on" period of Woolly assistance, meal preparation, and KP duties. Generally your "on" cycle will start the evening of your presentation and lasts for 24 hours.

Prerequisites

You must have completed at least one geology course with a grade of B or better. Preferences are given to first-time students who have completed a five-day field trip with an A grade.

Logistics

Depart. Saturday, May 31, 8:30 a.m. (Luggage leaves the previous day.)

Return. Saturday, June 14, late afternoon - early evening

Cost. \$275. Make checks payable to: SBCC. You may pay at the Cashier's Office in the Student Services building or bring checks to pre-field trip meeting on Saturday, May 17. Some scholarship assistance is available--see an instructor for details.

Last Day for Payment. Saturday, May 17. **No refunds.**

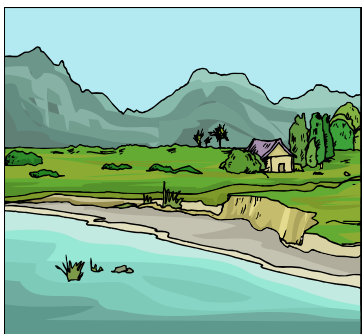
Transportation. SBCC vans (no private vehicles).

Food. Meals are prepared in our field kitchen by staff with student help.

Accommodations. Camping in National Monument and Park group sites.

Scholarship Information. There is a limited amount of scholarship money available to qualified students. Scholarships are based on need and merit. See your instructor if you wish to apply for aid. If you are applying for a scholarship, please **do not pay** the \$275 immediately as your scholarship award is deducted from your fee.

All scholarship applications are due by Monday, May 12th at 5:00 p.m.



How to Be a Participant

If you feel that you (and the other students on the trip) would benefit from your participation, please complete the attached form and return it to Jeff Meyer or Jan Schultz **by Friday, May 2nd, or sooner if possible.** If you are unsure or cannot participate, please mark the appropriate box on the following sheet and return it to Jeff Meyer or Jan Schultz also by that date. **RSVP ONE WAY OR THE OTHER.**

Pre-field Trip Organizational Meeting

There will be an organizational meeting for the trip on **Saturday, May 17, from 3:00 - 5:00 p.m.** at Rocky Nook Park. If you are planning on participating on the trip, please set this date aside. If you absolutely cannot attend, contact Jeff Meyer or Jan Schultz as soon as possible.

Preparation of Student Presentations May 21 - 30

The week before the field trip and after your finals will be devoted to the preparation of student presentations for the trip. Instructors, preparation materials, and guidance will be available. If you have unalterable plans and will be unavailable during this week, you **must** see one of the instructors.

Questions

SBCC (805) 965-0581		
Faculty/Staff	Office	E-Mail
Jeff Meyer	EBS 110	meyerj@sbcc.edu
Jan Schultz	EBS 117	schultz@sbcc.edu
Eiko Kitao	EBS 114	ebkitao@sbcc.edu
Kevin McNichol	EBS 118	kmmcnichol@sbcc.edu

Dates to Remember

Date	Event
May 17, Saturday	Last Day to pay for trip
May 17, Saturday	Organizational meeting, 3:00 - 5:00 p.m. , Rocky Nook Park
May 21-30, Wednesday - Friday	Days to prepare presentations
May 30, Friday	Bring luggage to EBS loading dock no later than 9:00 a.m.
May 31, Saturday	Depart for Colorado Plateau, 8:30 a.m., EBS loading dock
June 14, Saturday	Return to Santa Barbara, late afternoon - early evening

Visit our Website: <http://www.fieldstudy.com/geo>