

# SANTA BARBARA CITY COLLEGE

2022 STRATEGIC PLANNING



FALL IN-SERVICE  
*August 25, 2022*



# AGENDA

---

- APPROACH, PROCESS + TIMELINE
- CAMPUS + COMMUNITY ENGAGEMENT
- 2022 STRATEGIC PLANNING
- NEXT STEPS

# APPROACH

---

## INTEGRATED

*A sustainable approach to planning that builds **relationships**, aligns the organization, and emphasizes **preparedness for change**.*

-- Society for College and University Planning (SCUP)

# APPROACH

INTEGRATED

Current College Plans

**STRATEGIC PLAN**

Educational + Facilities Master Plan  
Student Equity Plan  
Distance Ed Plan  
Strategic Enrollment

Resource Planning

- Facilities
- Technology
- Human
- Fiscal

Data



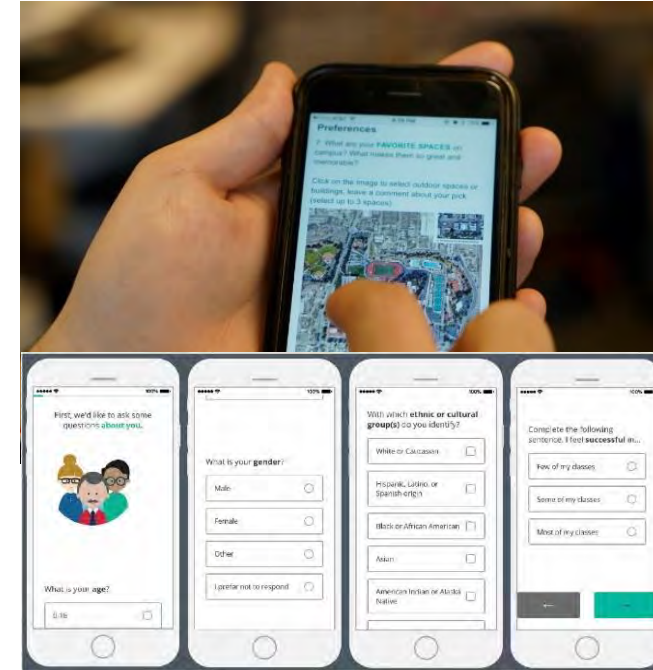
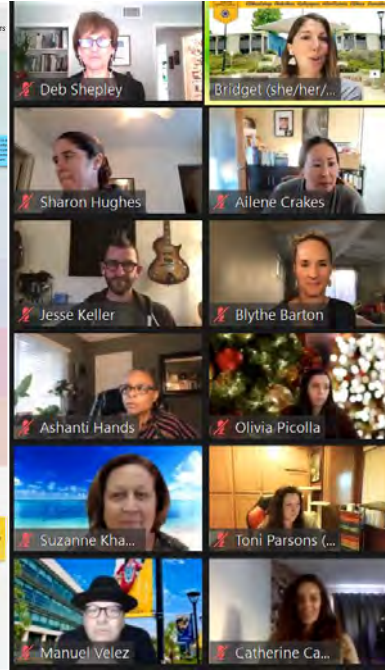
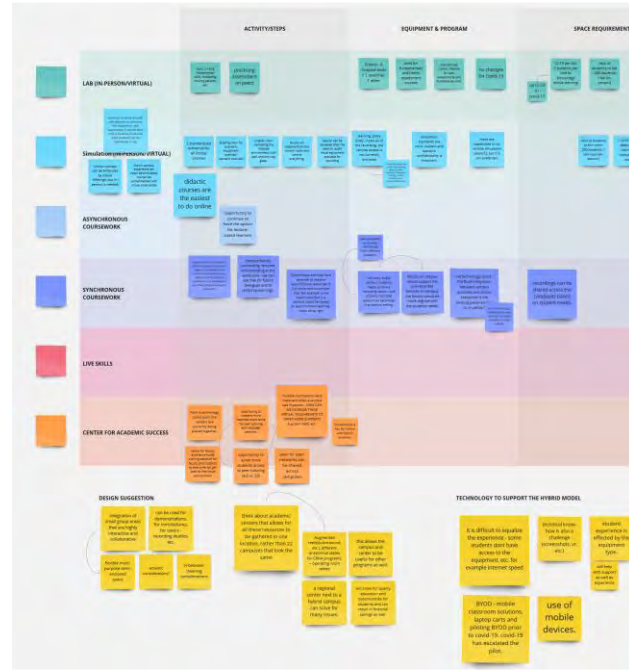
**Integrated Planning**

# APPROACH

## PARTICIPATORY

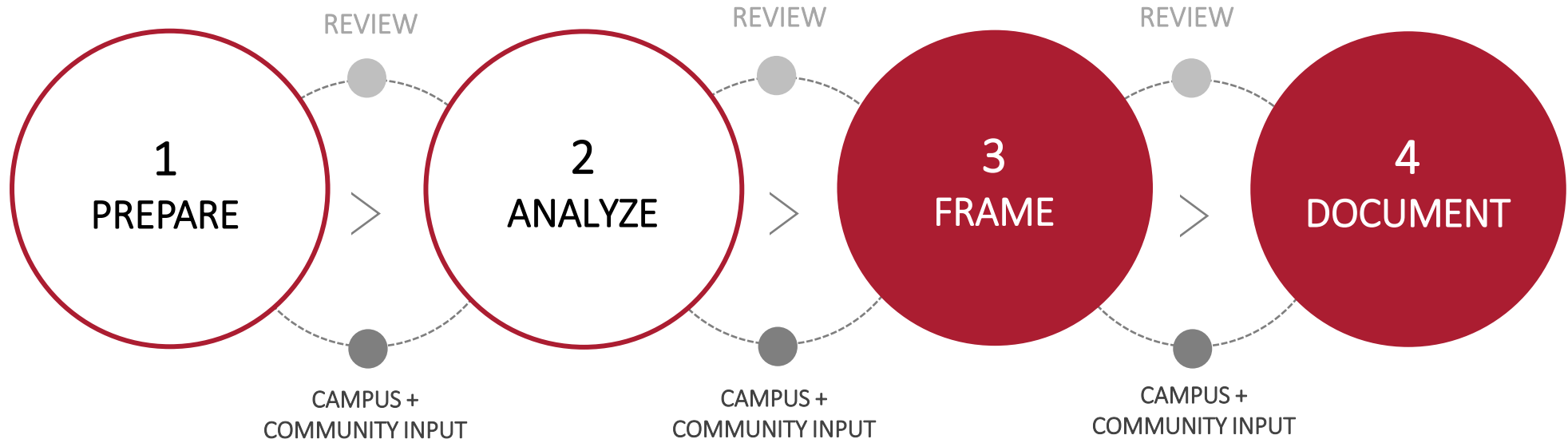
### Intentional Stakeholder Engagement

- Equitable and Inclusive
- Campus and Community

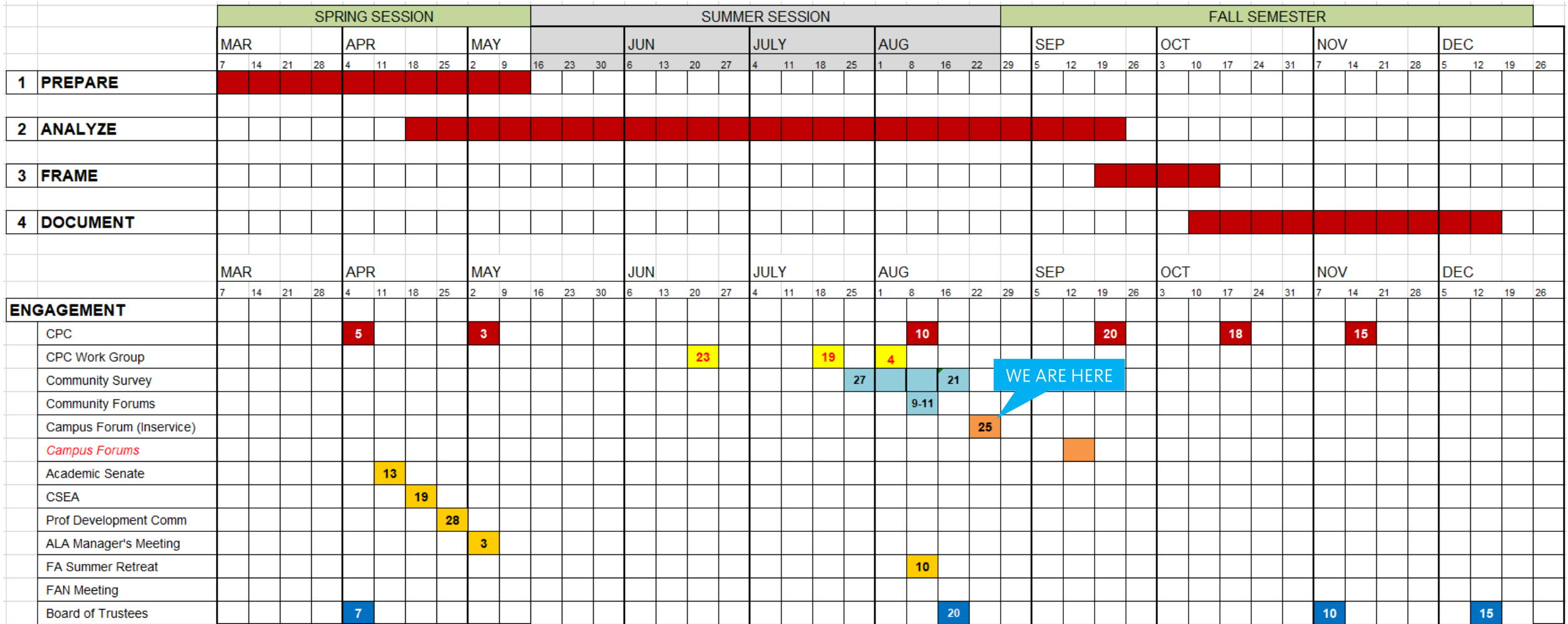


# PROCESS + TIMELINE

---



# PROCESS + TIMELINE



WE ARE HERE





# EMERGING THEMES

---

## ON-CAMPUS LISTENING AND LEARNING



# EMERGING THEMES

---

## GOVERNANCE GROUPS LISTENING SESSIONS & PROGRAM REVIEWS

*What is most important for SBCC to address?*



# EMERGING THEMES

## GOVERNANCE GROUPS LISTENING SESSIONS & PROGRAM REVIEWS

### CAMPUS CLIMATE



- Create an environment of trust and caring to increase student, faculty, and staff success
- Set clear college-wide directions and then follow through
- Enhance built environment to support collaboration and represent SBCC values

### EQUITY



- Establish a college-wide definition of equity
- Eliminate the disproportionately lower outcomes for Black and Latinx students
- Provide accessible and consistent technology for all students

### AGILITY & RESILIENCE



- Expect change! Prepare for ongoing changes in enrollment, curriculum, pedagogy, and technology
- Develop virtual, streamlined processes to produce more agile decision-making
- Anticipate employers' needs for new programs that will result in livable wage careers for students
- Use demographic data to align resources with course offerings, staffing, and support services

### STUDENT SUPPORT



- Meet students' academic and basic needs
- Foster students' sense of belongingness across all learning modalities
- Combine high tech with high touch

# EMERGING THEMES

## GOVERNANCE GROUPS LISTENING SESSIONS & PROGRAM REVIEWS



### ACADEMIC EXCELLENCE

- Maintain academic integrity and high academic standards
- Close equity gaps for identified student groups
- Create equity-informed engaging learning environments in multiple modalities



### COMMUNITY BUILDING

- Foster partnerships and connections
- Serve as a community resource, across entire service area
- Listen to student voices, including alumni



### FISCAL, PHYSICAL & HUMAN RESOURCES

- Align resources to support college priorities
- Right-size the college across units to balance workload
- Manage enrollment through utilization of tools and data
- Renovate or replace outdated physical space on campus



### SUSTAINABILITY

- Expand college-wide sustainable practices
- Increase opportunities for students to learn about environmental sustainability
- Engage community groups in partnerships leading to actions on climate change





# COMMUNITY ENGAGEMENT

## SUMMARY OF FINDINGS

TABLE 11  
ELC7  
Sand...  
TR 9:05...  
TR 11:15...



## Strategic Planning

**Santa Barbara City College (SBCC) seeks the public's input as it moves forward with its strategic planning process to set goals and priorities**

The development of a new strategic plan comes at a crucial time for the college, as schools across the country have seen significant changes in how students access higher education and conditions created by the pandemic have revealed a variety of student needs in and out of the classroom. SBCC wants to hear from its local students and community members their thoughts on how to best move forward and meet their needs.

SBCC would especially like to hear from its community members about the following topics:

- Programs and classes needed
- Facilities improvements
- Services and events
- Modality of classes - in-person or online
- Alumni engagement
- Business community/employer engagement



[Take Our Strategic Planning Survey](#)



# COMMUNITY ENGAGEMENT



**Santa Barbara City College wants your input in shaping the future of your community college.**

**Join us at one of four in-person Strategic Planning Community Forums — and one virtual forum — to be held as follows:**

**Tuesday, August 9**

5:30-7:00 p.m.

The Lynda Fairly Carpinteria Arts Center  
865 Linden Avenue, Carpinteria

**Wednesday, August 10**

5:30-7:00 p.m.

Goleta Valley Community Center  
5679 Hollister Avenue, Goleta

**Thursday, August 11**

Noon-1:30 p.m.

Virtual - Zoom; to join, visit [sbcc.edu/forum](https://sbcc.edu/forum)

**Thursday, August 11**

5:30-7:00 p.m.

Santa Barbara High School  
700 E. Anapamu Street, Santa Barbara

**Tuesday, August 16**

5:30-7:00 p.m.

SBCC Wake Campus Auditorium  
300 N. Turnpike, Santa Barbara

---








All forums will include Spanish-language interpretation and ASL interpretation (in-person); closed captioning (Zoom).





# COMMUNITY ENGAGEMENT

## SURVEY QUESTIONS

- Q1**  Familiarity with SBCC  
*online*
- Q2**  Attendance at SBCC  
*online*
- Q3**  Perception of SBCC  
*online*
- Q4**  Program, classes, and / or services offered by SBCC  
*online + in person*
- Q5**  Areas of focus  
*online + in person*
- Q6**  Programs / courses / skills to serve our community?  
*online + in person*
- Q7**  Additional comments  
*online + in person*

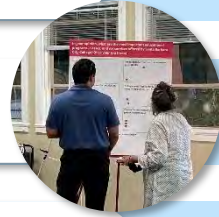
 ONLINE SURVEY

 CAMPUS FORUMS  *IN PERSON + ONLINE*

4 LOCATIONS



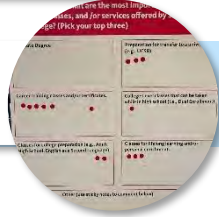
Carpinteria



Goleta

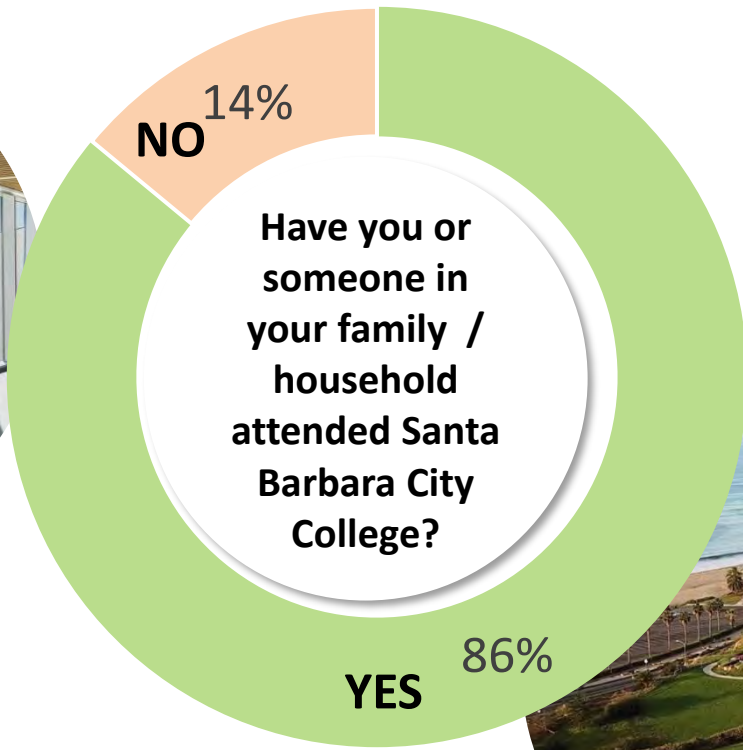
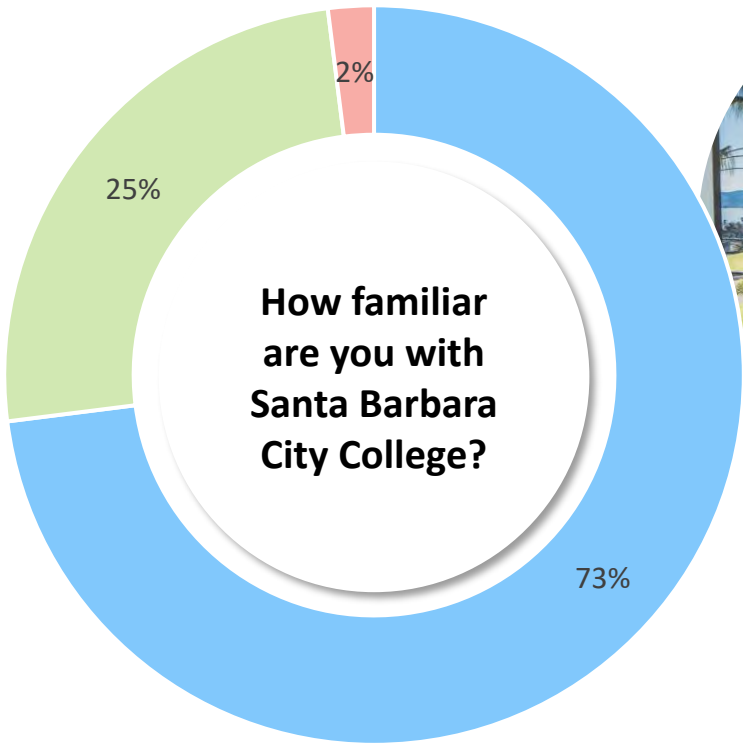


Santa Barbara



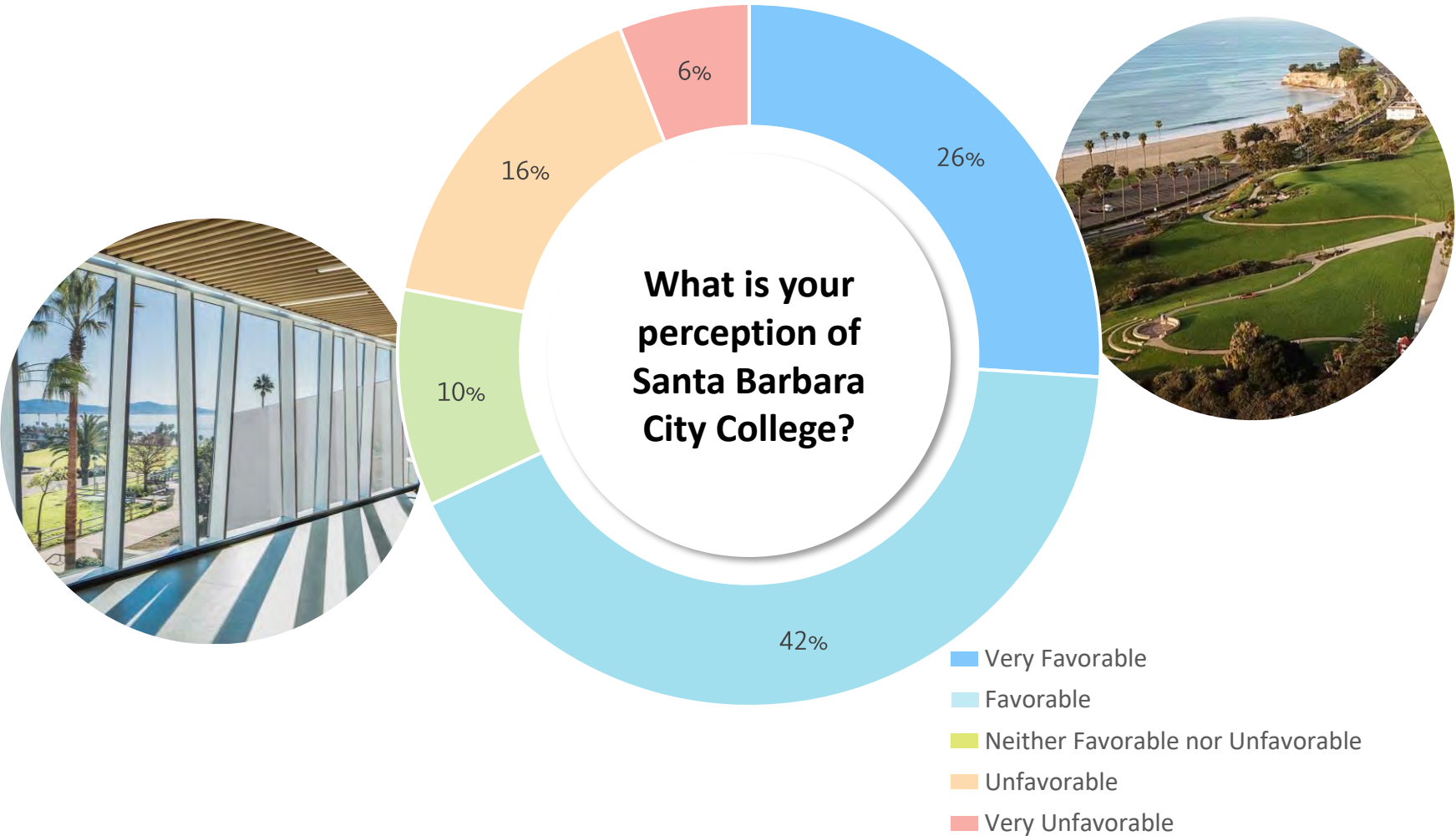
Wake

# COMMUNITY ENGAGEMENT



Very Familiar   Somewhat Familiar   Not Familiar

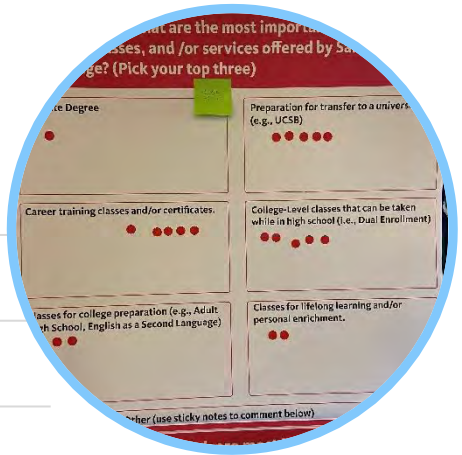
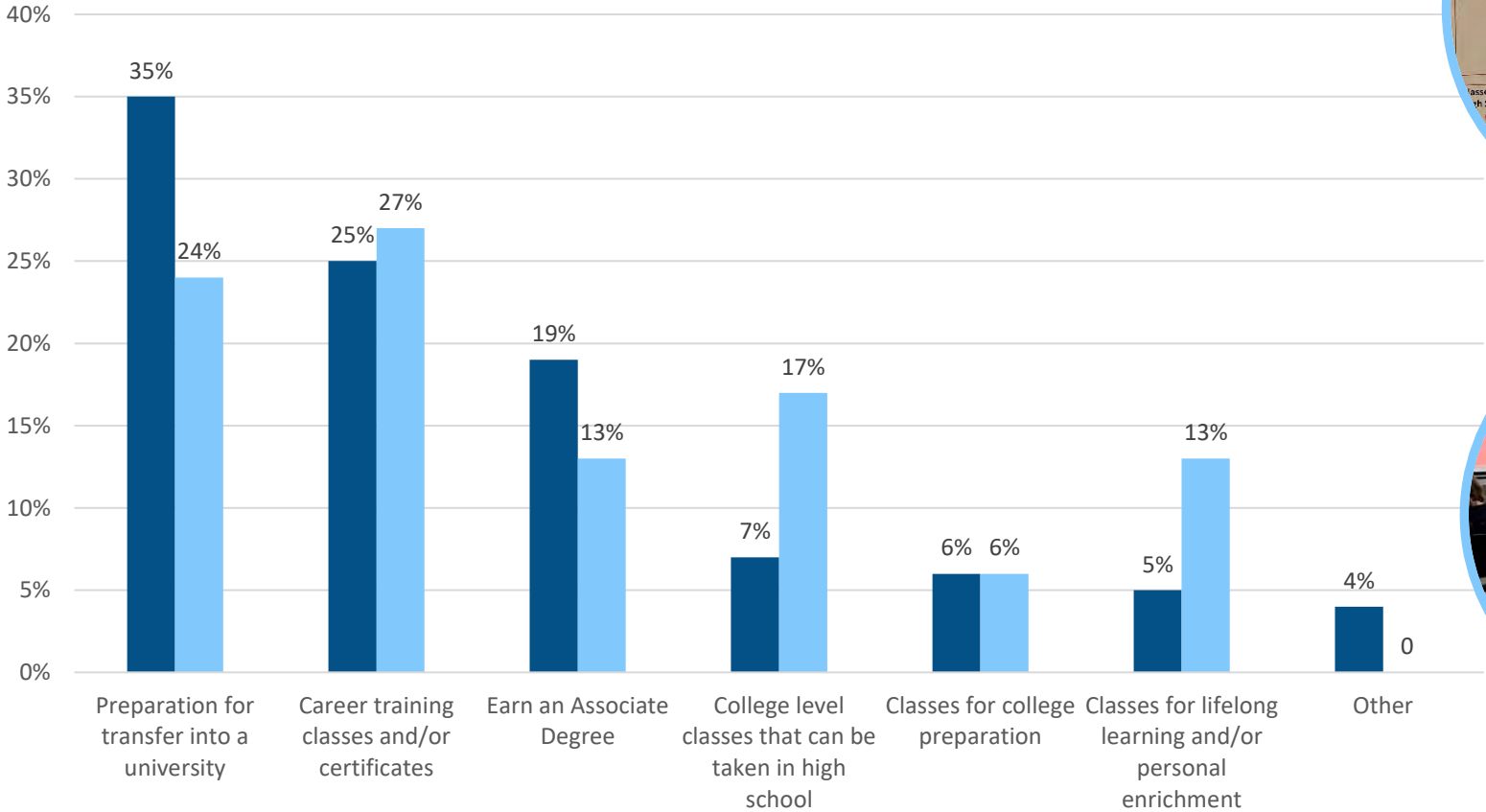
# COMMUNITY ENGAGEMENT





# COMMUNITY ENGAGEMENT

What are the most important educational programs, classes, or services offered by SBCC? (Pick top 3)



# COMMUNITY ENGAGEMENT

What do you believe are the important areas for SBCC to focus on over the next ten years?

## TOPICS

STUDENT LEARNING + COMPLETION



EDUCATION ACCESS FOR ALL



COMMUNITY PARTNERSHIPS



FACILITIES + INFRASTRUCTURE



STUDENT SUPPORT



# COMMUNITY ENGAGEMENT

**What do you believe are the important areas for SBCC to focus on over the next ten years?**

## STUDENT LEARNING + COMPLETION

Vocational training and education in the trades

Integrate / develop more credit programs at satellite campuses

Improve quality of online classes

Certificate or associate programs / diversity of programs

Support Early Childhood program



## EDUCATION ACCESS FOR ALL

Increased resources for students with disabilities

Affordable education

Supporting our most vulnerable / marginalized students

Increase online offerings / hybrid learning

Improve campus climate for all students and faculty



## COMMUNITY PARTNERSHIPS

Rebuilding relationships with local high schools

Community access and non-partisan leadership

Increase enrollment from the local community

Community involvement with local business

Internship programs with local businesses





# COMMUNITY ENGAGEMENT

What do you believe are the important areas for SBCC to focus on over the next ten years?

## STUDENT SUPPORT

Strategies for student success (tutoring, mentoring)

Increase student voices and student involvement

Become relevant in the eyes of current and future students

Critical thinking, self reliance, strong work ethic, responsibility

Diversity in college leadership that translates to student success



## FACILITIES + INFRASTRUCTURE

Bring students back to campus

Provide spaces that promotes collaboration + exploration

Build or adapt facilities to support new programs

Student housing

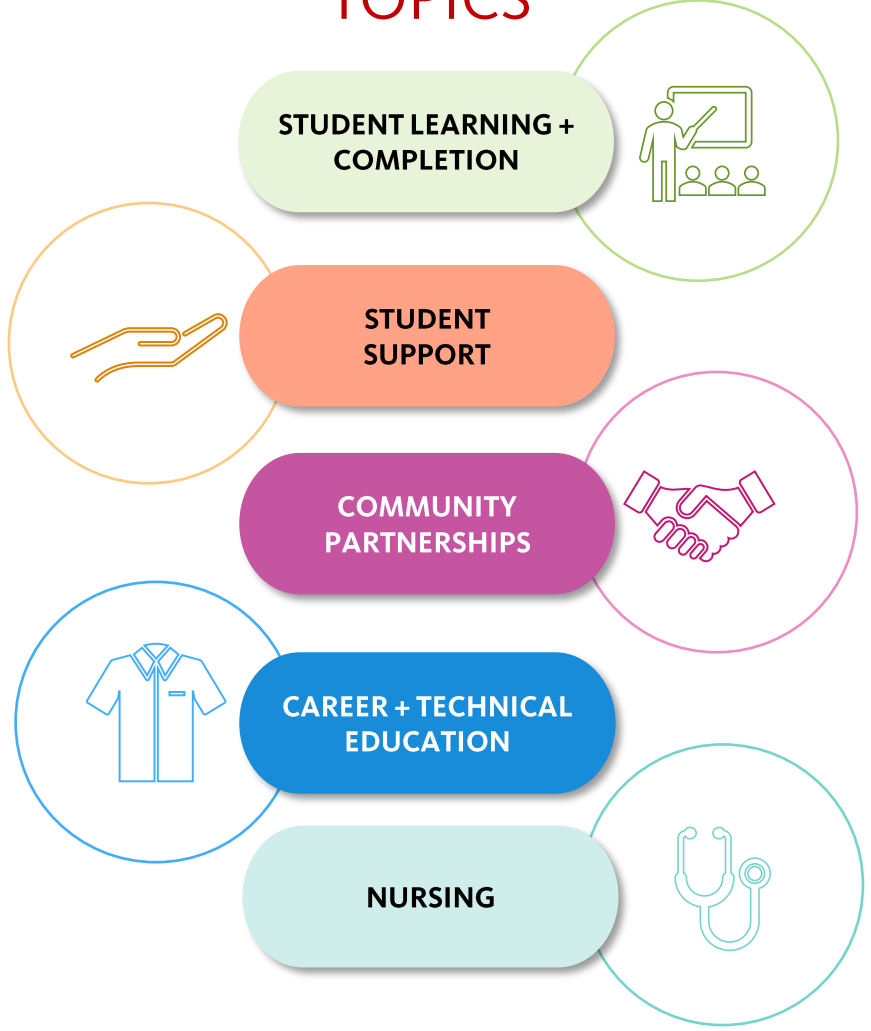
Providing healthy food for students



# COMMUNITY ENGAGEMENT

What programs, courses or skills are most important to serve the workforce needs in our community?

## TOPICS



# COMMUNITY ENGAGEMENT

**What programs / courses / skills are most important to serve the workforce needs in our community?**

## STUDENT LEARNING + COMPLETION

Bachelor degree options

Hospitality, tourism, and culinary arts

STEM / Nursing / Medicine

Business Mngt / Agriculture

Computer Information / Technology



## STUDENT SUPPORT

Trades Training

Interpersonal / Communication Skills

Money Mngt / Critical Thinking

Computer skills for service industry

Life skills / skills in sustainability (gardening, cooking, health)



## COMMUNITY PARTNERSHIPS

Develop partnerships with local businesses

Courses for low-income families

Internship programs with local businesses

Sustainability

Adult Education





# COMMUNITY ENGAGEMENT

What programs / courses / skills are most important to serve the workforce needs in our community?

## CAREER + TECHNICAL EDUCATION

Career-readiness education

Computer skills / Software

Automation / Technology

Entrepreneurial training; starting / maintaining a business

Hospitality / Restaurant



## NURSING

Home Healthcare / Elder Care

Hire more nurse instructors

Shorten student time on waitlist

EMT / First Responders

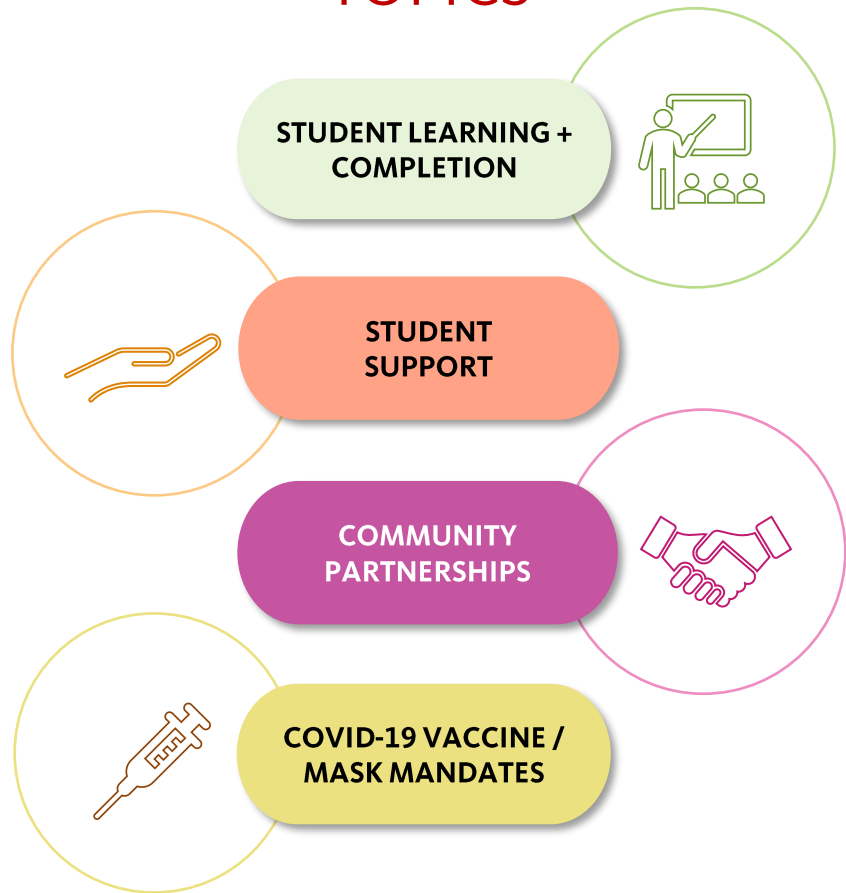
Fire Sciences



# COMMUNITY ENGAGEMENT

Are there any additional comments you would like to add?

## TOPICS



# COMMUNITY ENGAGEMENT

Are there any additional comments you would like to add?

## STUDENT LEARNING + COMPLETION

Re-open culinary program and integrate sustainable practices

Increase adult education

Offer Bachelors degree

Increase online classes

Attract and keep the best faculty and staff



## STUDENT SUPPORT

Allocate resources depending on economic outlook

Improve dual enrollment procedures

Increased access to support services and equal opportunity

Weekend and evening tech support

Transparency in salary and degree completion





# COMMUNITY ENGAGEMENT

Are there any additional comments you would like to add?

## COMMUNITY PARTNERSHIPS

Include guest / adjunct faculty from the community

Engage with various community groups

Leadership from the community

Become better advocates of environmental conservation

Work-study opportunities at local businesses



## COVID-19 VACCINE / MASK MANDATES

Open school to community regardless of vaccination status

Make education available to all students

COVID measures exceed public health and CDC guidelines

People no longer feel included due to mandates

Foster a space of open dialogue



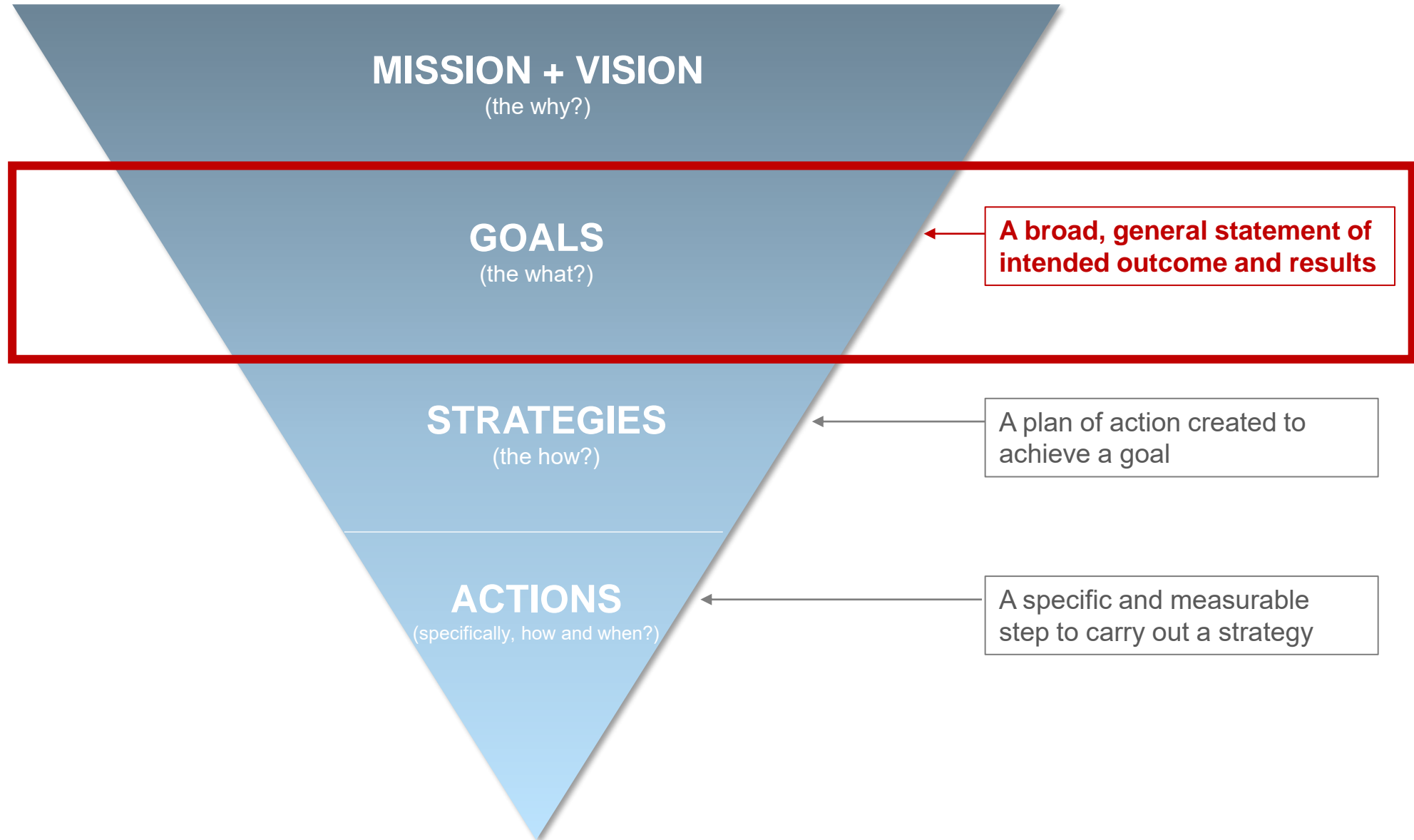


# 2022 STRATEGIC PLANNING

---

# 2022 STRATEGIC PLANNING

## DEFINITIONS





# 2022 STRATEGIC PLANNING



## PREVIOUS STRATEGIC DIRECTIONS (2019-2022)

1. Improve student learning and achievement of educational goals.

2. Provide effective management and the District's human, fiscal, physical, and technological resources to increase organizational effectiveness and environmental sustainability.

3. Achieve enrollment efficiencies to better serve our community.

4. Improve campus climate throughout the district.

5. Maintain positive connections with our community.

6. Prepare the campus for impacts of climate change.

### DISCUSSION

#### Observations

All are focused on problems

All are valuable

Not hopeful

Many are strategies

Clarification is needed

#### Ideas

Shift to be more optimistic and aspirational

SBCC is an exciting place to work

Address trust and communication

# 2022 STRATEGIC PLANNING

---

## DRAFT GOAL AREAS

Strategic Directions and  
Goals for 2019-22



Emerging Themes



Draft GOAL AREA 2022-30

# 2022 STRATEGIC PLANNING

## DRAFT GOAL AREAS

### Strategic Directions and Goals for 2019-22

**Strategic Direction 1:**

Improve student learning and achievement of educational goals.

**Strategic Direction 2:**

Provide effective management of the District's human, fiscal, physical and technological resources to increase organizational effectiveness and environmental sustainability

**Strategic Direction 3:**

Achieve enrollment efficiencies to better serve our community

**Strategic Direction 6:**

Prepare the campus for impacts of climate change

**Strategic Direction 4:**

Improve campus climate throughout the District

**Strategic Direction 5:**

Maintain positive connections with our community



### Emerging Themes

- EQUITY
- STUDENT SUPPORT
- ACADEMIC EXCELLENCE

- AGILITY & RESILIENCE
- FISCAL, PHYSICAL + HUMAN RESOURCES
- SUSTAINABILITY

- CAMPUS CLIMATE

- COMMUNITY BUILDING



### Draft GOAL AREA 2022-30

**STUDENT LEARNING  
& COMPLETION**

**CARE & STEWARDSHIP**

**CAMPUS CLIMATE**

**COMMUNITY PARTNERSHIPS**



# 2022 STRATEGIC PLANNING

---

## DRAFT GOAL AREAS



STUDENT LEARNING  
& COMPLETION



CARE &  
STEWARDSHIP



CAMPUS  
CLIMATE



COMMUNITY  
PARTNERSHIPS

# 2022 STRATEGIC PLANNING

## DRAFT GOAL AREAS



### STUDENT LEARNING & COMPLETION

- Create engaging and equity-informed learning and support service environments in multiple modalities
- Eliminate equity gaps across student groups
- Anticipate and prepare for ongoing shifts in enrollment, curriculum, pedagogy, and technology
- Prioritize accessibility by combining digital modalities with equitable computer support, training, and equipment

*Care for our students*



### CARE & STEWARDSHIP

- Treat everyone with dignity and respect for their lived experiences
- Strengthen belongingness for all faculty, staff and students
- Develop and sustain processes that prioritize environmental justice and sustainability
- Align resources to support college priorities

*Care for our employees & institution*



### CAMPUS CLIMATE

- Communicate, communicate, communicate
- Replace ad hoc processes with widely-understood, accountable, and agile decision-making processes
- Inspire faculty and staff to engage meaningfully with our Mission Statement
- Invest in faculty and staff development to promote inclusive, innovative, and resilient practices

*Care for our campus community*



### COMMUNITY PARTNERSHIPS

- Enter into lifelong partnerships with our students, before they come here, while they are here, and after their lives beyond
- Serve as a community resource across the entire service area
- Engage our community members, educational partners, and business leader to build shared understanding and mutual interests
- Develop processes that increase our ability to respond quickly to community needs

*Care for our local communities*



### MISSION

As a public community college dedicated to the success of each student . . .

- Santa Barbara City College welcomes all students. The College provides a diverse learning environment and opportunities for students to enrich their lives, advance their careers, complete certificates, earn associate degrees, and transfer to four-year institutions.
- The College is committed to fostering an equitable, inclusive, respectful, participatory, and supportive community dedicated to the success of every student.

### OUR VISION

Santa Barbara City College strives to build a socially conscious community where knowledge and respect empower individuals to transform our world.



## STUDENT LEARNING & COMPLETION

- Create engaging and equity-informed learning and support service environments in multiple modalities
- Eliminate equity gaps across student groups
- Anticipate and prepare for ongoing shifts in enrollment, curriculum, pedagogy, and technology
- Prioritize accessibility by combining digital modalities with equitable computer support, training, and equipment

*Care for our students*



## CARE & STEWARDSHIP

- Treat everyone with dignity and respect for their lived experiences
- Strengthen belongingness for all faculty, staff and students
- Develop and sustain processes that prioritize environmental justice and sustainability
- Align resources to support college priorities

*Care for our employees & institution*



## CAMPUS CLIMATE

- Communicate, communicate, communicate
- Replace ad hoc processes with widely-understood, accountable, and agile decision-making processes
- Inspire faculty and staff to engage meaningfully with our Mission Statement
- Invest in faculty and staff development to promote inclusive, innovative, and resilient practices

*Care for our campus community*



## COMMUNITY PARTNERSHIPS

- Enter into lifelong partnerships with our students, before they come here, while they are here, and after their lives beyond
- Serve as a community resource across the entire service area
- Engage our community members, educational partners, and business leader to build shared understanding and mutual interests
- Develop processes that increase our ability to respond quickly to community needs

*Care for our local communities*



A photograph of two young women sitting at a table in a library or study area. The woman on the left has curly brown hair and is wearing a denim jacket over a light-colored top. She is looking at a laptop screen. The woman on the right has dark hair and is wearing glasses and a blue and black striped shirt. She is also looking at the laptop screen and has her hand on a document. In the background, other people are visible at tables, and there are bookshelves and a bulletin board. The overall atmosphere is focused and academic.

# COLLEGIAL CARE

---

# COLLEGIAL CARE

---

What does 'care' mean to different people?



*Students*



*Faculty*



*Staff*



*Community Members*





A landscape photograph showing a wide, green grassy field in the foreground. In the middle ground, there is a wooden fence with several posts. Behind the fence, there are several trees, including a large, full tree on the left and a cluster of smaller trees in the center. The background shows a clear sky and a distant horizon line. The word "VALUES" is overlaid in white, uppercase letters on the left side of the field.

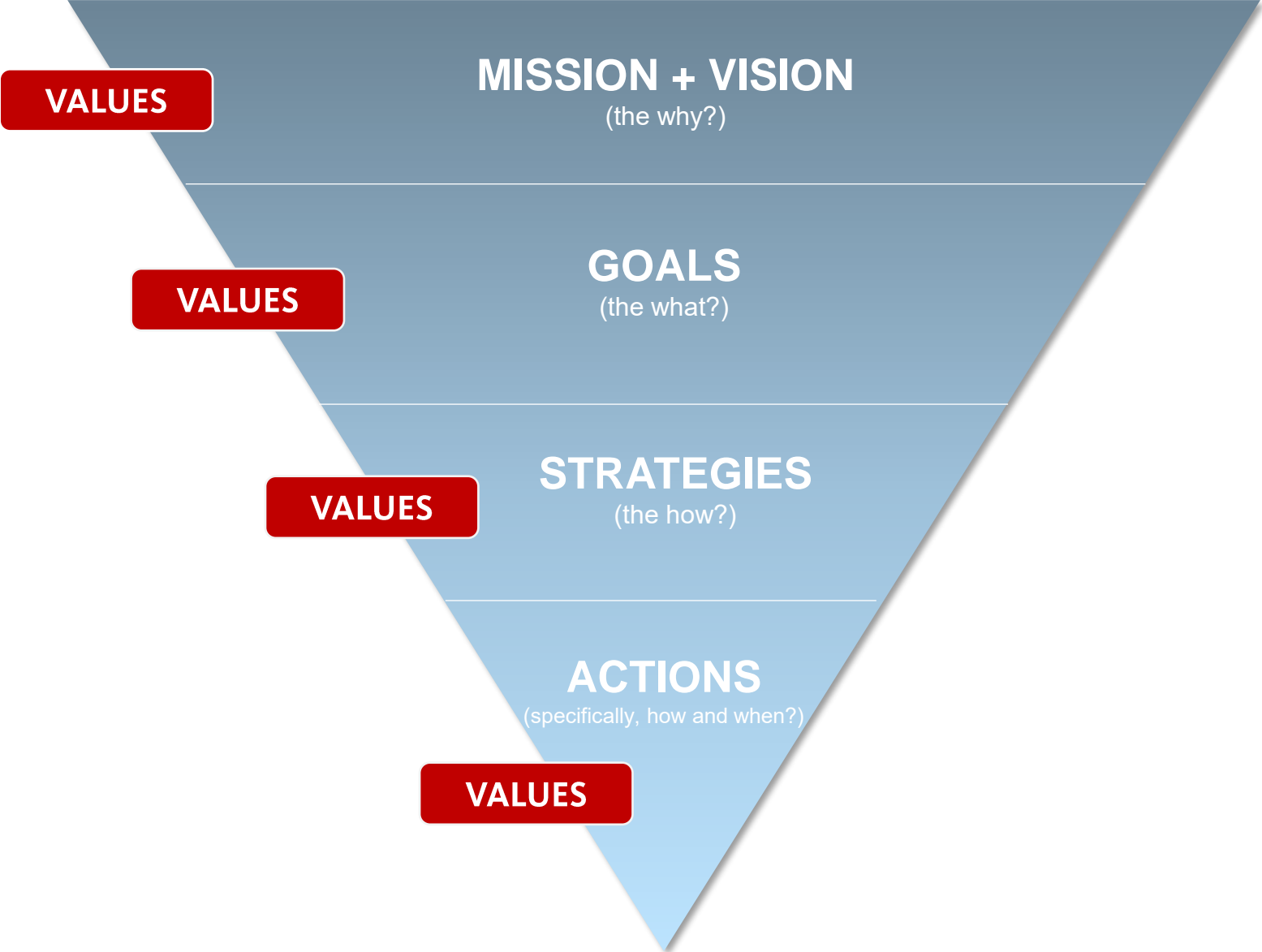
# VALUES

---



# VALUES

---



# VALUES

---

When you think about the college in the next 10 years, what values must we embed in our work?

- *EQUITY*
- *INTEGRITY*
- *INCLUSION*
- *RESPECT*
- *ACCOUNTABILITY*
- *EXCELLENCE*
- *EMPOWERMENT / AGENCY*
- +
- +



HEARING FROM YOU...

---

# COLLEGE SURVEY

---

## TOPICS

### DRAFT GOAL AREAS

As you think about your role at the college, do they align with the SBCC mission and vision?

Additional ideas?

### COLLEGIAL CARE

What does 'care' mean to

- Students
- Faculty
- Staff
- Community Members

### VALUES

What values must guide the work of the college?



### In-Service

- Aug 25

### College Survey

- Week of Aug 29th to mid-Sep

### On-Campus Forum

- Week of Sep 12th

### CPC Meetings

- Sep, Oct, Nov

### Governance Groups

- Sep, Oct, Nov

### Board of Trustees

- Nov, Dec

# NEXT STEPS

---



# SANTA BARBARA CITY COLLEGE

2022 STRATEGIC PLANNING



FALL IN-SERVICE  
*August 25, 2022*